

**Efficient**

# Basetower

## 4x320W LED

**Basetower** designed to guarantee high stability and secure parking even in the most critical applications. **Stable, effective, cost saving:** Basetower, connected to an energy source, is able to guarantee lighting coverage of up to 7800 sqm.

RUNNING TIME

LIGHTING AREA

COST SAVING

SHIPMENT EFFICIENCY

**LUMEN**  
249.300 lm

**BASEMENT**  
Stationary

**VOLTAGE**  
230V

**ILLUMINATED AREA**  
7800 sq m

**ACOUSTIC EMISSION**  
0 dB

**ENGINE EMISSION**  
None

**FREQUENCY**  
50 Hz

**START**  
Automatic

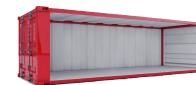
**CONSUMPTION**  
4X320W  
1.28 kW



**26X**



13,5 m



**21X**



12 m

